

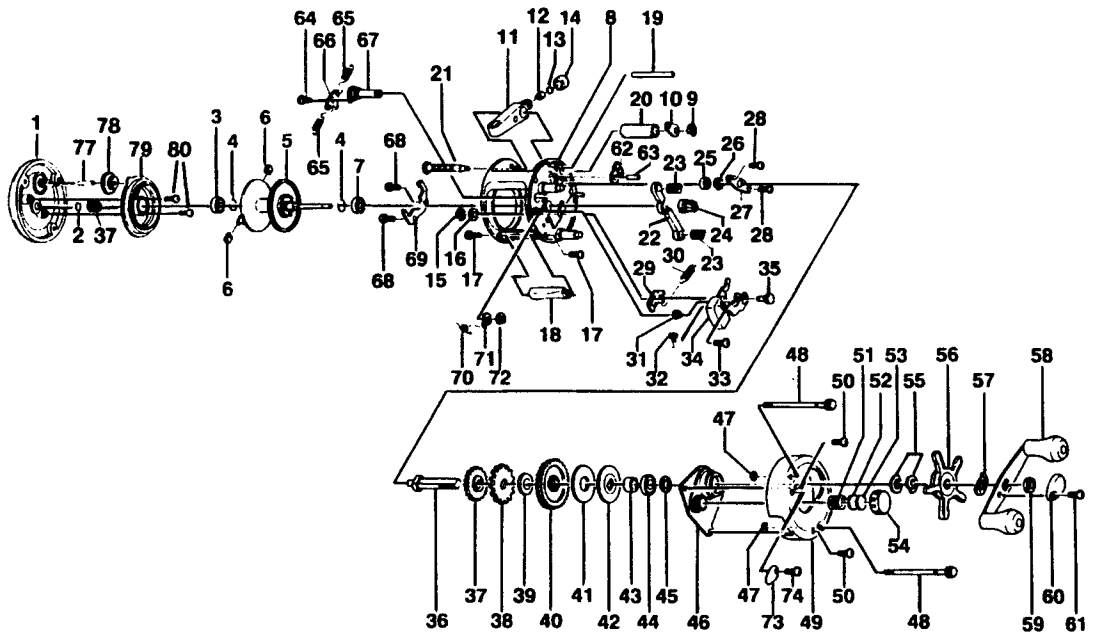
# QUANTUM® IR310

## SPECIFICATIONS:

Medium Heavy Freshwater  
 Light Saltwater  
 200 yds/20 lb. Line Capacity  
 5.2:1 Ratio  
 10.6 oz. Weight  
 Thumb Button Clutch  
 Posi-Lok Anti-Reverse  
 3 Ball Bearings

## FEATURES:

Machined, one-piece  
 aluminum frame  
 Rugged, one-piece  
 aluminum side plates  
 Machine-forged aluminum  
 spool  
 Brass Magnum Gears  
 Oversized metal star drag  
 Audible on/off bait click  
 Non-disengaging levelwind  
 Color: Gold



Key No.	Part No.	Description	Price	Key No.	Part No.	Description	Price
1	FV323-01	Left Side Cover Assy	14.15	41	JX059-01	Drag Disc	1.44
2	XX038-02	Spool Shaft Washer	.26	42	JX045-01	Drag "D" Washer	.88
3	JX106-01	Bearing - Spool Shaft	6.33	43	JX052-01	Spacer - Crank Shaft	.67
4	JX080-01	Clip Ring	.26	44	TW058-01	Bearing - Crank Shaft (U)	7.21
5	FV321-01	Spool Assy	14.75	45	JX038-01	Crank Shaft Washer	.31
6	XX044-01	Brake Shoe B	.26	46	JX066-02	Crank Shaft Guide	3.35
7	JX106-01	Bearing - Spool Shaft	6.33	47	JX073-01	O-Ring - Thumb Screw	.31
8	FV301-01	Frame Assy	25.20	48	JX074-05	Thumb Screw	.45
9	QW120-01	E-Clip - Worm Shaft	.26	49	XX024-06	Right Side Cover	9.75
10	JX067-01	Bushing - Worm Shaft	.31	50	QW123-01	Right Side Cover Screw	.15
11	JX347-02	Line Guide Carrier Assy	2.32	51	JX105-01	Spring - Tension Knob	.31
12	JX006-02	Line Guide Pawl	2.25	52	QW032-02	Washer - Spool Tension	.26
13	JX035-01	Washer - Line Guide Pawl	.26	53	JX082-01	Washer - Cushion	.21
14	JX007-02	Screw - Line Guide Carrier	.52	54	XX033-01	Spool Tension Knob	2.82
15	NX092-01	E-Clip - Kick Lever Guide Post	.30	55	JX046-01	Spring "D" Washer	.67
16	XX035-01	Washer - Kick Lever Guide	.26	56	XX355-02	Star Drag Assy	3.45
17	JX050-01	Screw - Thumb Rest	.31	57	NX054-01	Handle Washer	.26
18	FV009-01	Thumb Rest	.65	58	FV318-01	Handle Assy	7.00
19	FV061-01	Line Guide Carrier Guide	1.00	59	QW003-01	Handle Nut	.36
20	FV016-01	Worm Shaft Guide	.75	60	JX034-02	Handle Nut Cap	.36
21	FV372-01	Worm Shaft Assy	7.45	61	QW123-01	Handle Nut Cap Screw	.15
22	JX025-01	Pinion Yoke	.52	62	JX363-01B	Anti-Reverse Pawl Assy	2.52
23	JX040-01	Yoke Spring	.21	63	JX098-01	Post - Anti-Reverse Pawl	.41
24	JX011-01	Pinion Gear	5.36	64	XX125-01	Screw - Clicker Pawl	.98
25	JX017-01	Bushing - Crank Shaft (L)	.77	65	JX110-01	Clicker Spring	.21
26	QW120-01	E-Clip - Crank Shaft	.26	66	JX114-01	Clicker Pawl	.70
27	JX002-01	Retainer - Crank Shaft	.57	67	JX084-01	Clicker Cam	2.88
28	JX107-01	Screw - Crank Shaft Retainer	.15	68	JX125-01	Screw - Clicker Spring Holder	.21
29	JX077-01	Kick Lever	.57	69	JX103-01	Clicker Spring Holder	1.20
30	JX097-01	Spring - Kick Lever	.15	70	JX022-01	Spring - Clicker Cam	.26
31	JX068-01	Bushing - Release Slider Guide	1.08	71	JX041-01	Click Cam Actuator	.36
32	JX104-01	Spring - Release Slider	.21	72	JX075-01	C-Clip	.21
33	XX050-01	Screw - Release Slider	.15	73	JX109-02	Click Lever	.52
34	JX339-02	Release Slider Assy	1.80	74	QW053-05	Screw - Click Lever	.26
35	JX102-01	Post - Kick Lever Guide	.88	76	JX121-01	Washer - Thumb Screw	.21
36	JX008-01	Crank Shaft	2.88	77	FV098-01	Idel Gear Post	.50
37	FV112-01	O/S Drive Gear	.50	78	FV127-01	O/S Idel Gear	1.00
38	JX083-01	Trip Ratchet	.93	79	FV351-01	Spool Cover Assy	6.65
39	JX111-01	Washer - Ratchet	.46	80	AV125-01	Spool Cover Screw	.70
40	JX012-01	Drive Gear	7.67				

<b>MODEL INTRODUCED</b>	1996	<b>EFFECTIVE DATE OF PARTS LIST/DIAGRAM</b>	Oct. 1996	<b>DISCONTINUED</b>	N/A
-------------------------	------	---	-----------	---------------------	-----

Prices subject to change without notice. Prices do not include postage and handling.

